

Instructions For Use
Infinite TT-S Closure System
Cable Routing
Version 1.0

This document has been developed to support the implementation of the BOA lacing for the Infinite Socket™ TT-S system. It is intended for use by clinicians and industry professionals and will provide benefits in establishing an effective approach to the control of clinical outcomes for Infinite Socket™ patients.

MORE QUESTIONS?

CONTACT OUR
CUSTOMER SERVICE

844.888.8546



COMPONENTS

A. BOA lace

B. BOA reel

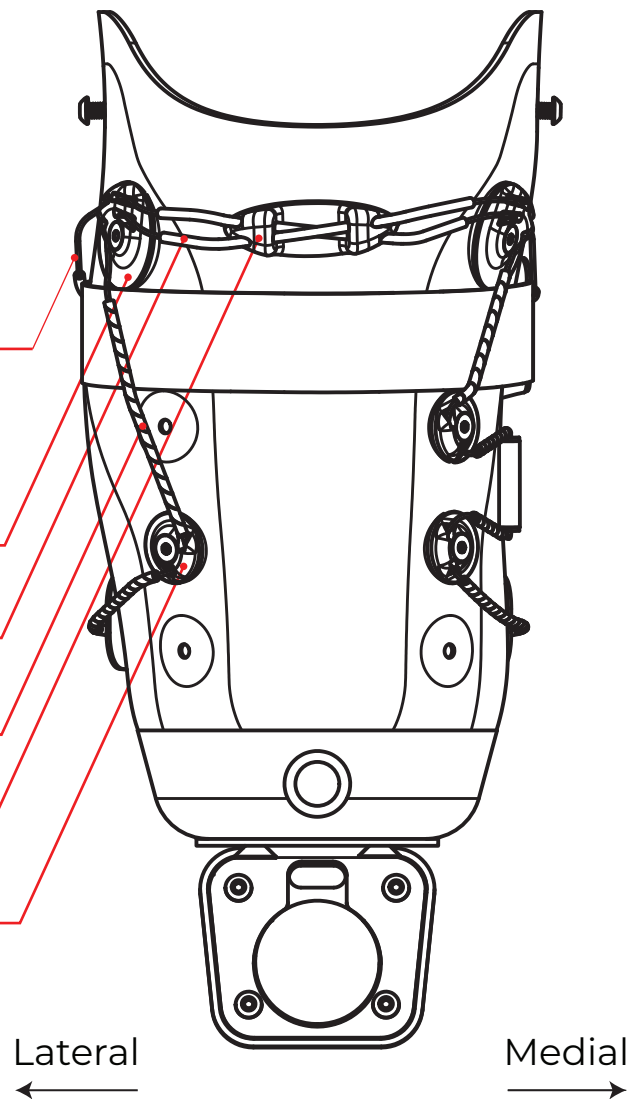
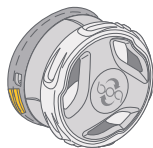
C. Proximal guide

D. Solid BOA tubing

E. Spiral BOA tubing

F. Crossover guide

G. Distal guide



COMPONENTS

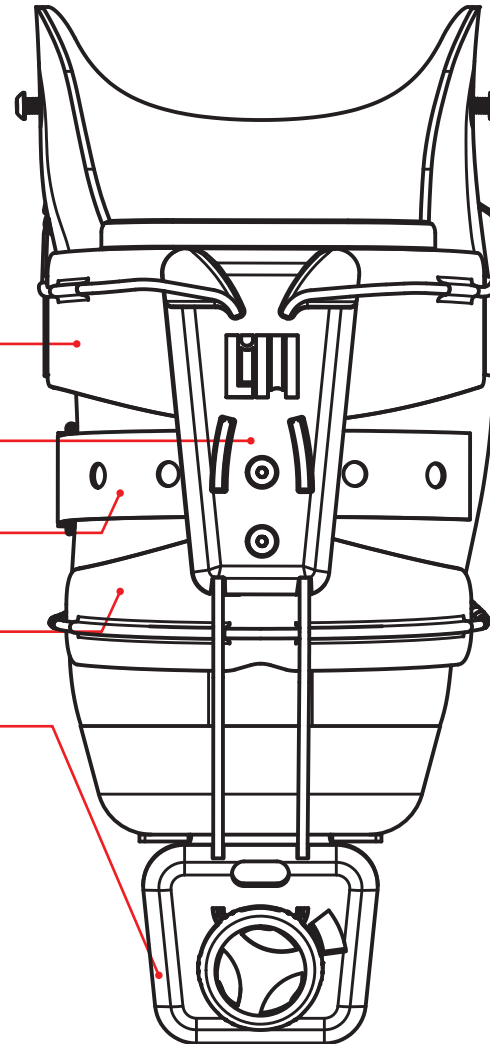
H. Proximal firmwear

I. Peninsula

J. Pressure management strap

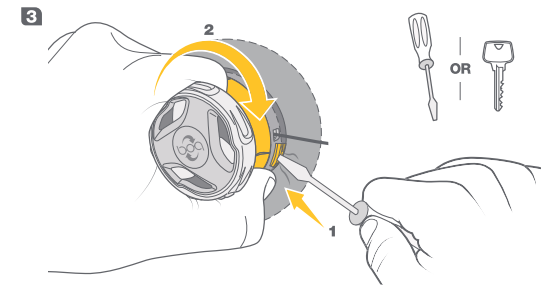
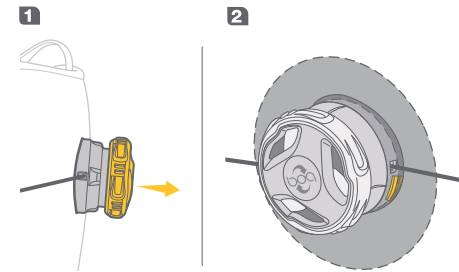
K. Distal Firmwear

L. BOA Housing

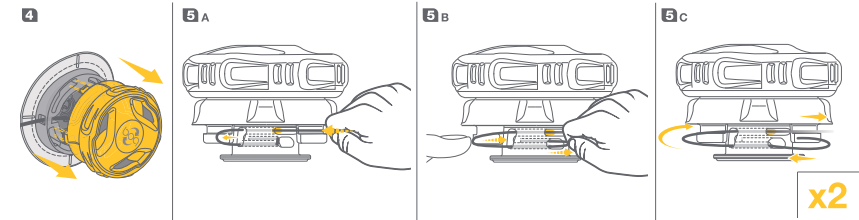


Step 1

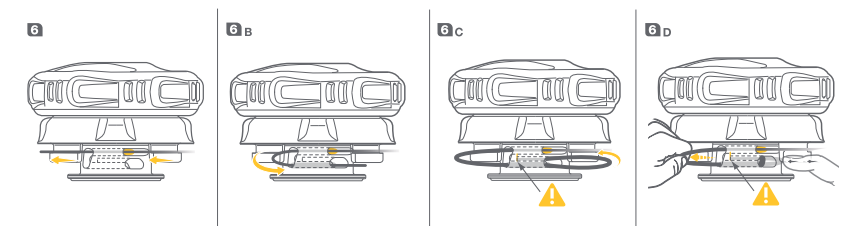
Thread one end of the stainless steel lace into the BOA reel following instructions provided by Click Medical.



REMOVE OLD LACE FROM THE REEL



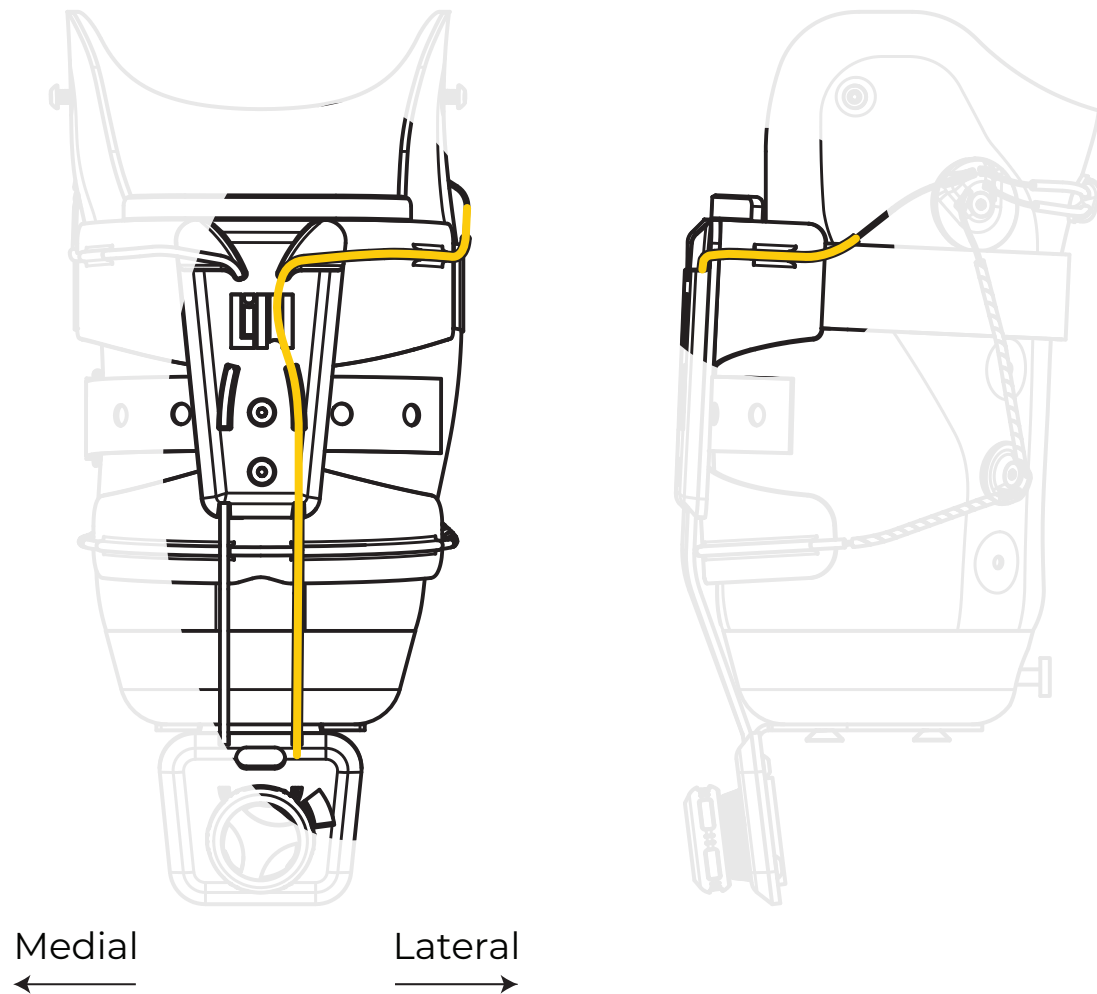
LACING THE NEW CABLE OR REEL



Step 2

On the lateral side of the socket, run a solid BOA tube along the highlighted yellow line, placed in the BOA housing, over the distal firmwear, through the peninsula, and out the proximal firmwear.

Pass the BOA lace through the BOA housing and BOA tube up through the proximal firmwear.

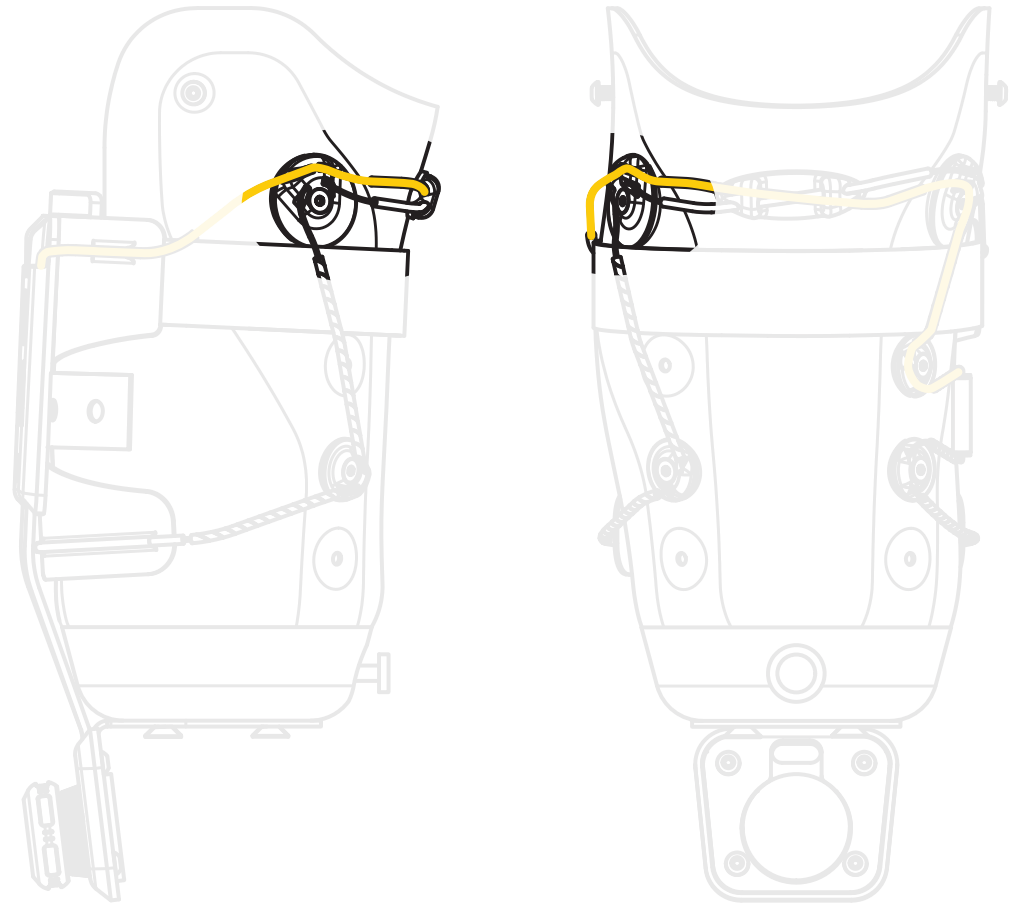


Step 3

Pass the BOA lace through the upper channel of the lateral proximal guide.

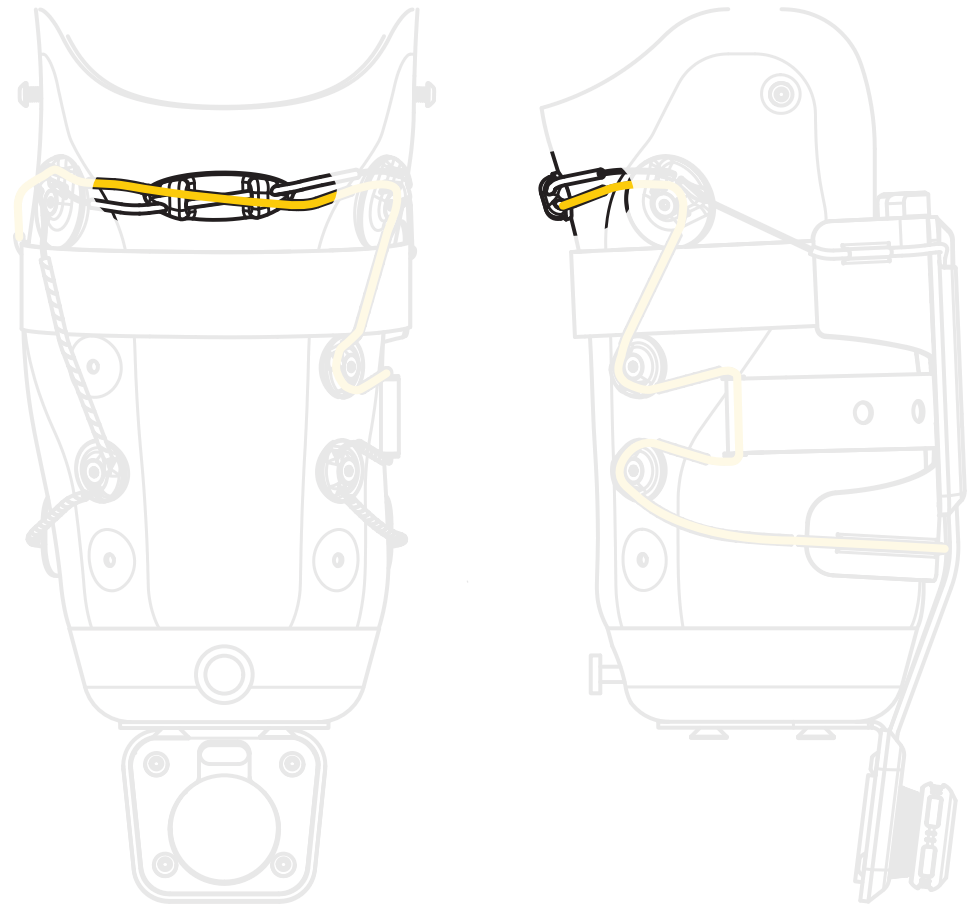
Note:

If you have difficulty running lace through the distal or proximal guides, unscrewing the guides will allow access to the back for easier lacing.



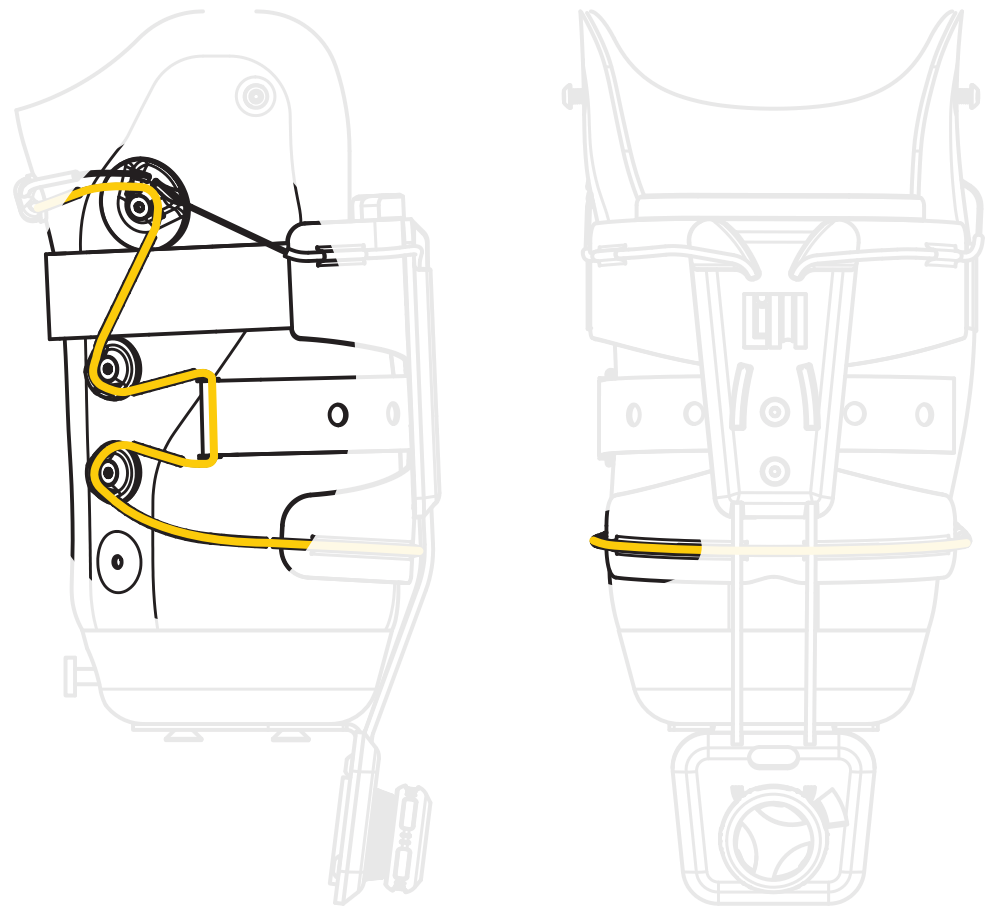
Step 4

Run a piece of solid BOA tubing through the crossover guide, diagonally from proximal lateral hole to the distal medial hole. Run the BOA lace through the tubing.



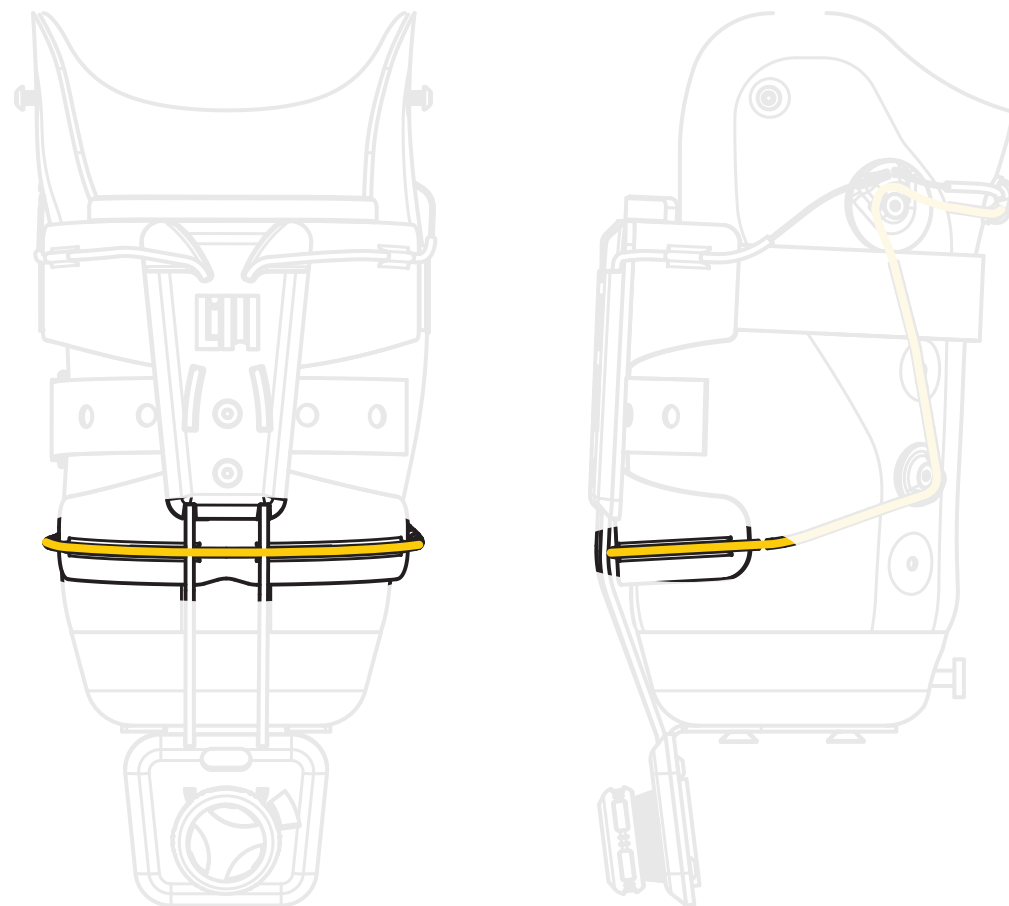
Step 5

Pass the lace through the lower channel of the medial proximal guide, the upper medial distal guide, the pressure management strap, and the lower medial distal guide.



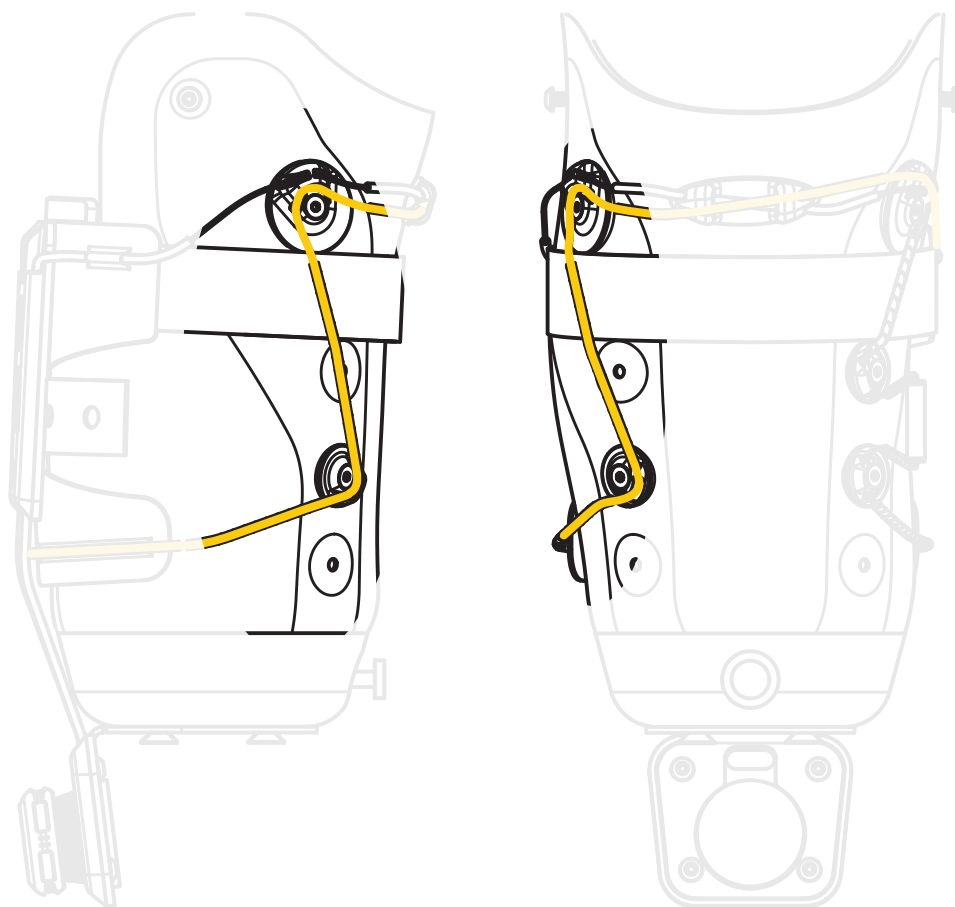
Step 6

Run a single piece of BOA tubing through the distal firmwear. Pass the lace through the tubing.



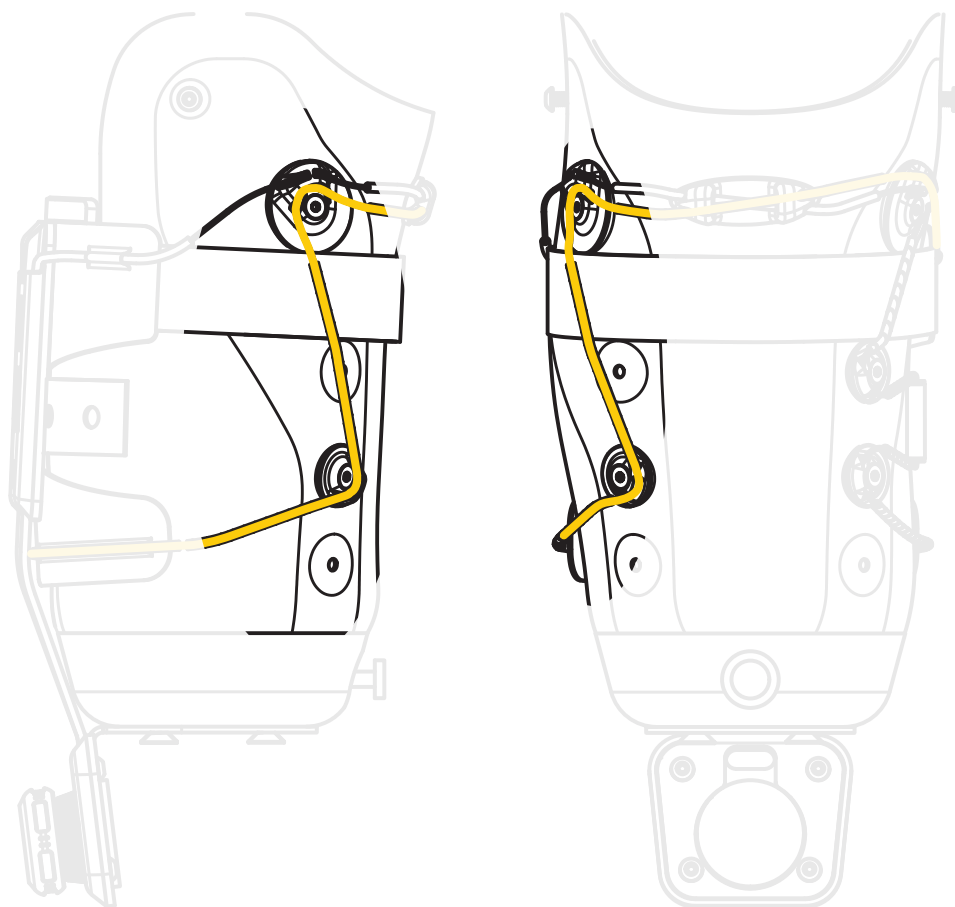
Step 7

Pass the lace through the lateral distal guide then the inner channel of the lateral proximal guide.



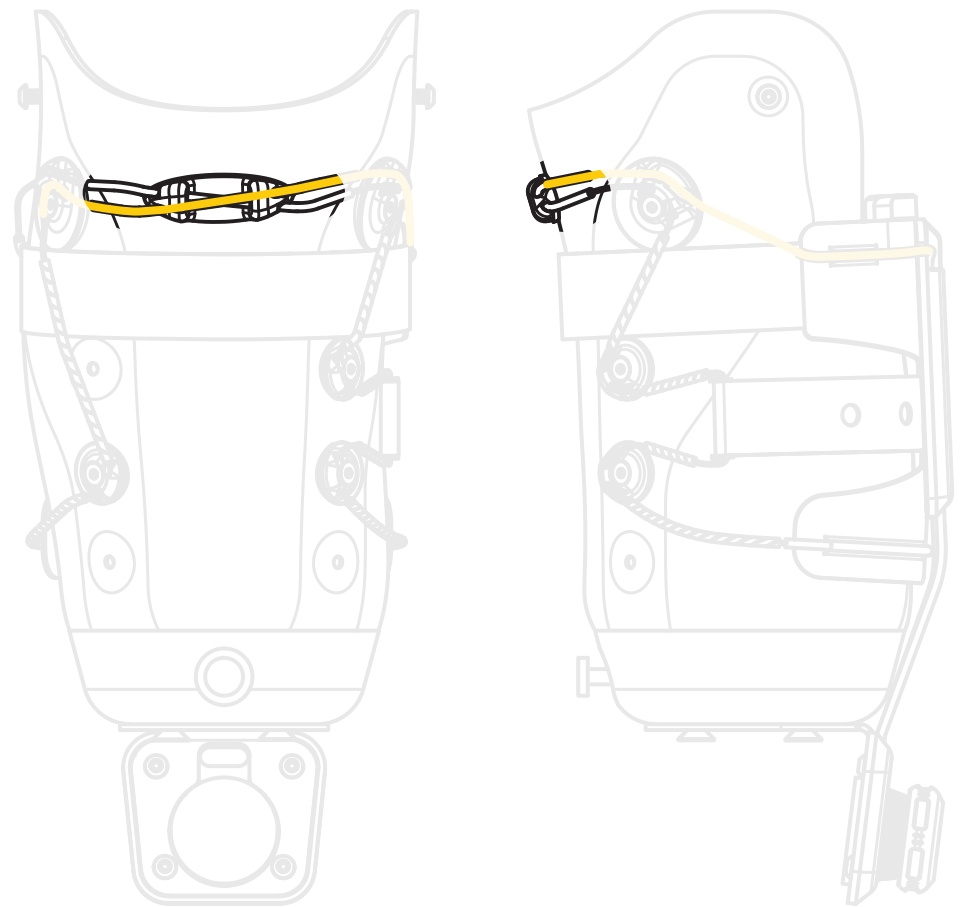
Step 7

Pass the lace through the lateral distal guide then the inner channel of the lateral proximal guide.



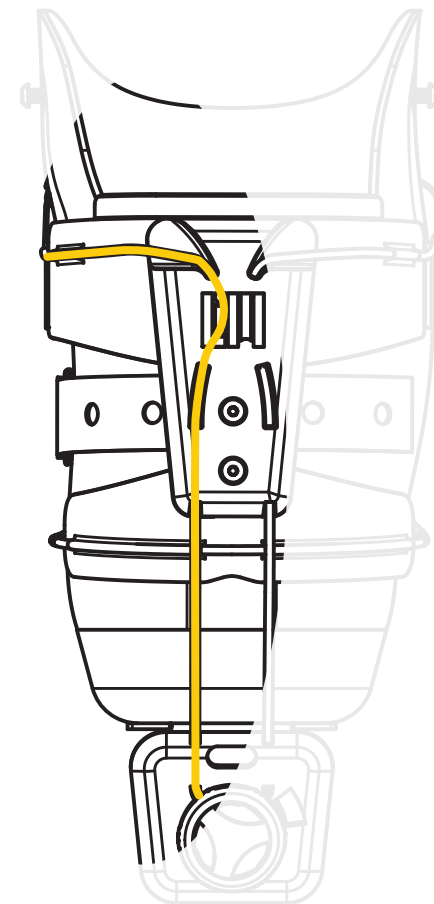
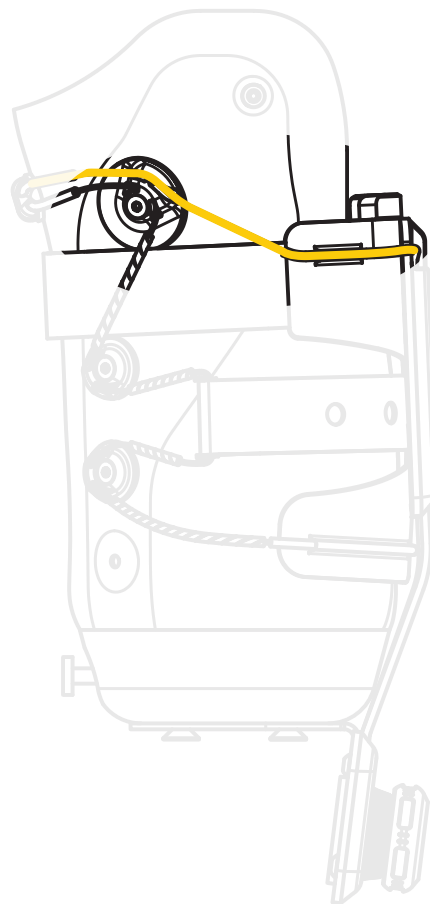
Step 8

Run a piece of solid BOA tubing through the crossover guide, going from the distal lateral hole to the proximal medial hole. Pass the BOA lace through the tubing.



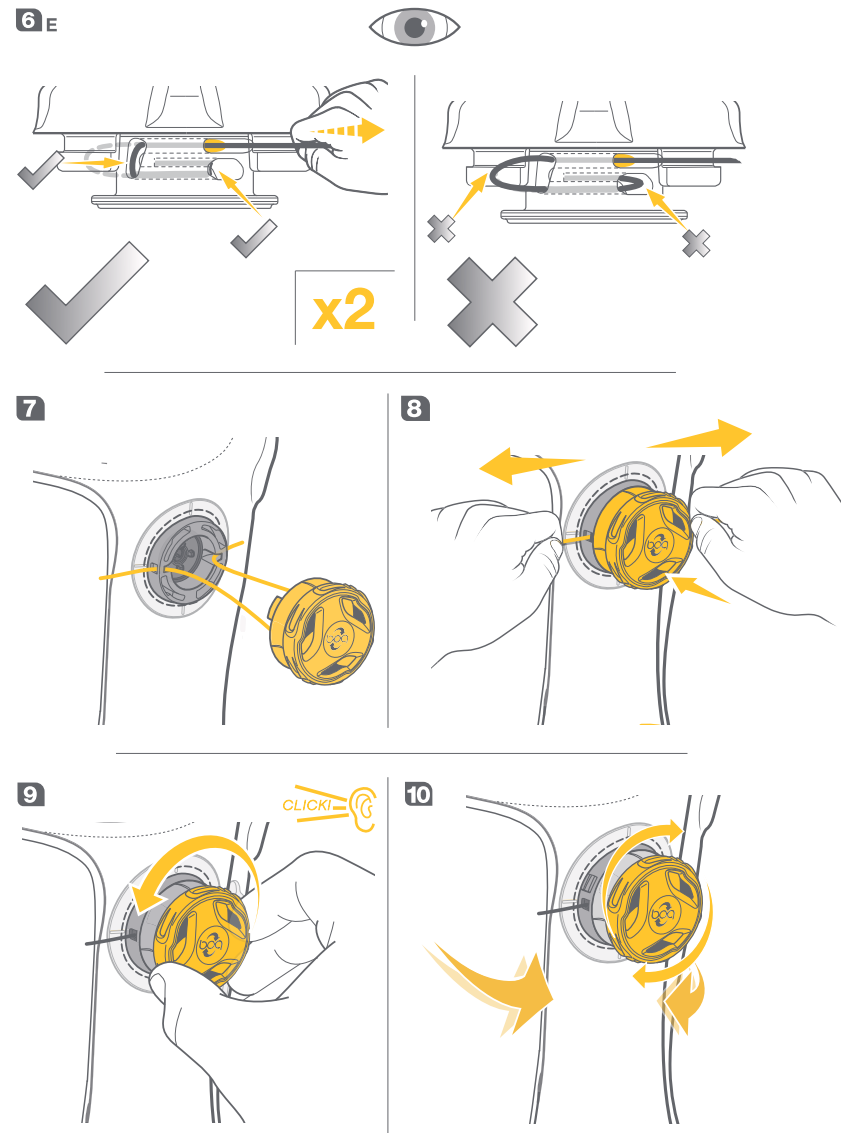
Step 9

Run a piece of solid BOA tubing from the BOA housing through the medial half of the peninsula and proximal firmwear, mirroring the lateral side. Pass the lace through the outer channel of the medial proximal guide and the tubing into the BOA housing.



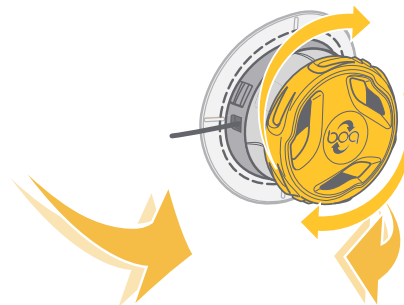
Step 10

Thread loose end of lace into BOA reel according to BOA instructions.
Insert BOA reel back into housing and rotate the reel to allow it to key in place.



Step 11

Check for normal function of the assembly.



Note:

Ensure all distal guides are properly aligned with lace path. Improper guide alignment will cause premature lace failure.

